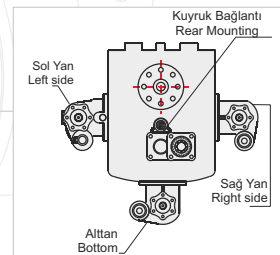
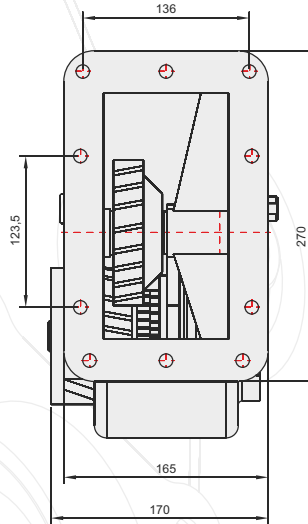
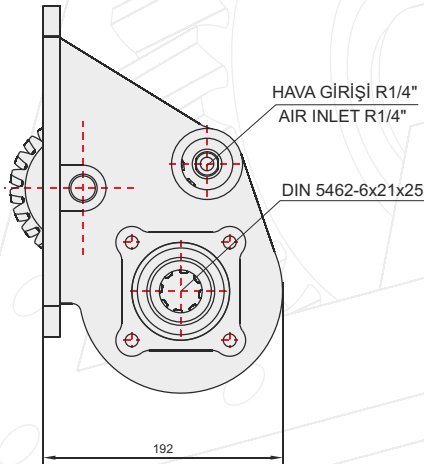
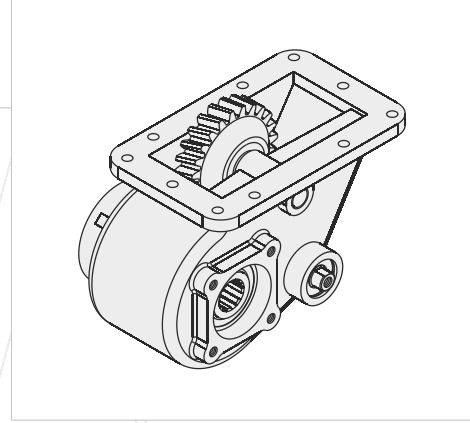


50318522



GENEL BİLGİLER/GENERAL DATA

P.T.O. KODU / P.T.O. CODE	50318522	
Tork / Torque	29 Kgm	284 Nm
Güç(1000 rpm) / Power	37,5 Hp	27,6 Kw
Devir / Speed	1000 rpm	1000 rpm
Oran / Ratio	1/0,78	1/0,78
Ağırlık / Weight	22,5 kg	49,6 lb
Bağlantı / Mounting	Sağ yan	Right side
Kumanda / Control	Havali	Pneumatic
Dönüş / P.T.O. Rotation	Sağ - ISO	Right- ISO

Ana Şanzıman / Gearbox	Kullanılan Bazı Araçlar / Used Vehicles
GR 880 - GRH 880 SCANIA	P92 - 93- 111- 112C - 113R - 114H -142M - 144L - 93H 280 - R113M SCANIA P 113M - P114 GA 380 - 114 P - 124 R- 113P - 114R -113H 360

Seçtiğiniz pompanın dönüş yönü, P.T.O. dönüş yönü ile ters olmalıdır.
The rotation of the chosen pump has to be opposite with the rotation of P.T.O.

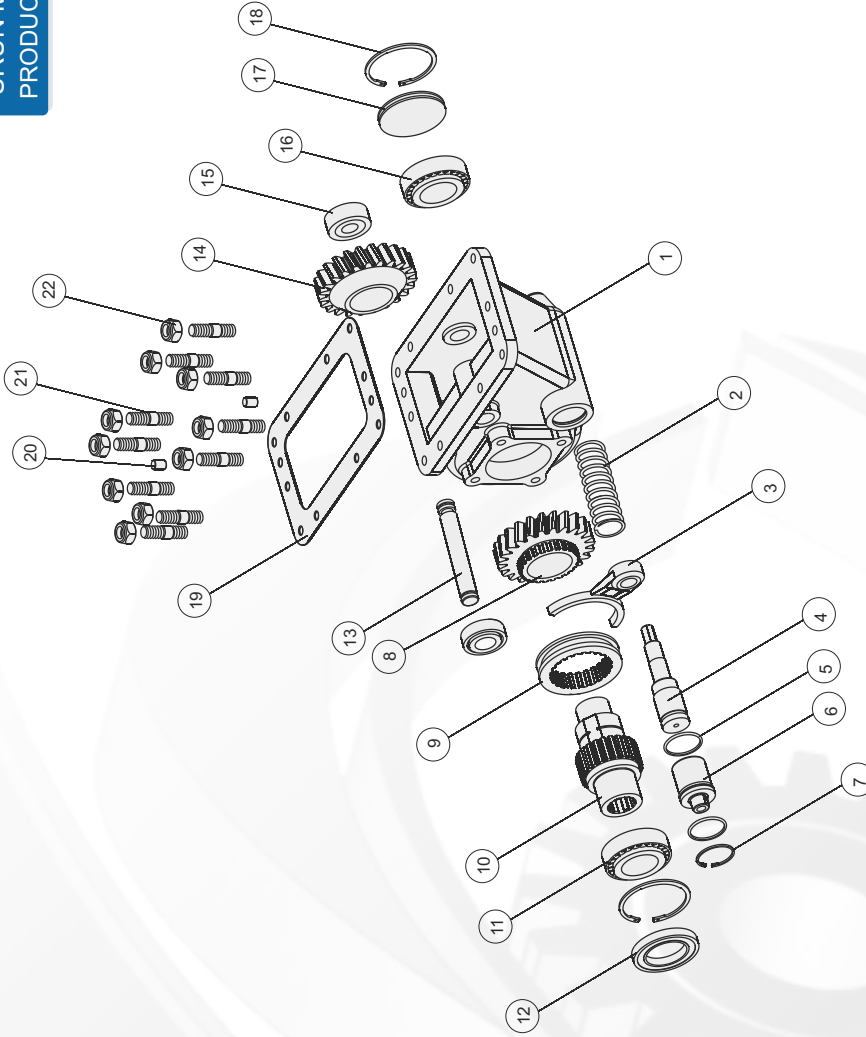
P.T.O. montaj edildikten sonra ana şanzıman yağını tamamlayın.
Fill the oil of the gear box after mounting the P.T.O.

POWER TAKE OFF

P.T.O.

POWER TAKE OFF

P.T.O.

ÜRÜN MONTAJ ve PARÇA LİSTESİ
PRODUCT ASSEMBLY and PART LIST

SCANIA GR 880

Adet	Parça No	Parça Adı	Kod
1	1	Gövde	50318522 -01
1	2	Pnömatik Yay	50318522 -02
1	3	Hilal	50318522 -03
1	4	Pnömatik Mil	50318522 -04
2	5	O-ring	50318522 -05
1	6	Pnömatik Kovan	50318522 -06
1	7	472-45 Segman	50318522 -07
1	8	Alt Dişli	50318522 -08
1	9	Senkromeç	50318522 -09
1	10	Alt Mil	50318522 -10
1	11	32010 Rulman	50318522 -11

Adet	Parça No	Parça Adı	Kod
1	12	50x80x8 Keçe	50318522 -12
1	13	20-Ust Mil	50318522 -13
1	14	Gr880 Üst Dişli	50318522 -14
2	15	30304 Rulman	50318522 -15
1	16	32208 Rulman	50318522 -16
1	17	Pto Yan Kapak	50318522 -17
2	18	472-80 Segman	50318522 -18
1	19	Conta	50318522 -19
2	20	Merkezleme Pimi	50318522 -20
10	21	M12x45 Saplama	50318522 -21
10	22	M12 Somun	50318522 -22
44	TOPLAM PARÇA SAYISI		