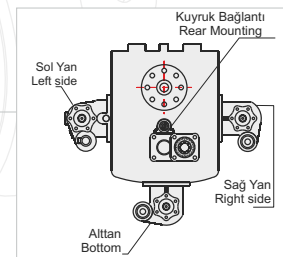
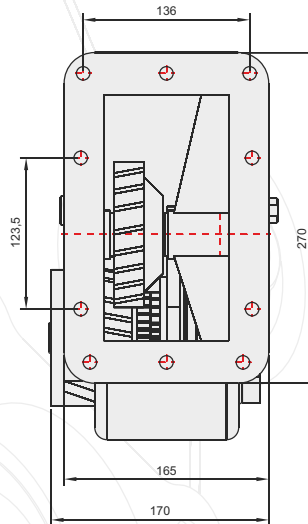
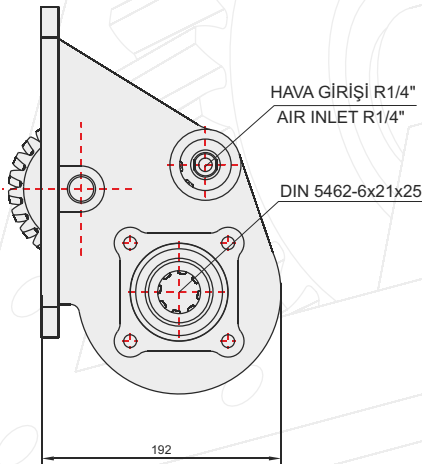
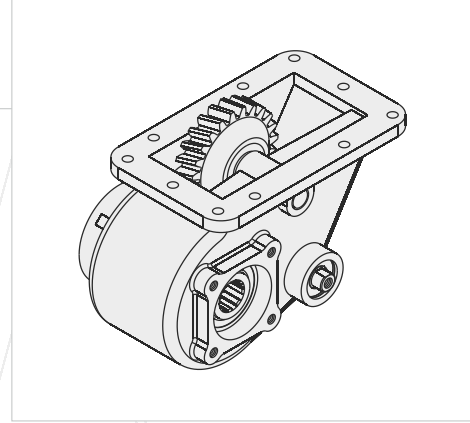


50324522



### GENEL BİLGİLER/GENERAL DATA

P.T.O. KODU / P.T.O. CODE	50324522	
Tork / Torque	29 Kgm	284 Nm
Güç(1000 rpm) / Power	37,5 Hp	27,6 Kw
Devir / Speed	1000 rpm	1000 rpm
Oran / Ratio	1/0,78	1/0,78
Ağırlık / Weight	22,5 kg	49,6 lb
Bağlantı / Mounting	Sağ yan	Right side
Kumanda / Control	Havali	Pneumatic
Dönüş / P.T.O. Rotation	Sağ - ISO	Right- ISO

Ana Şanzıman / Gearbox	Kullanılan Bazı Araçlar / Used Vehicles
GR 860 SCANIA	82H - 110 - 111 - 112 - 113 - 140 - 141H - 143 SCANIA

Seçeğinizin pompanın dönüş yönü, P.T.O. dönüş yönü ile ters olmalıdır.  
The rotation of the choosen pump has to be opposite with the rotation of P.T.O.

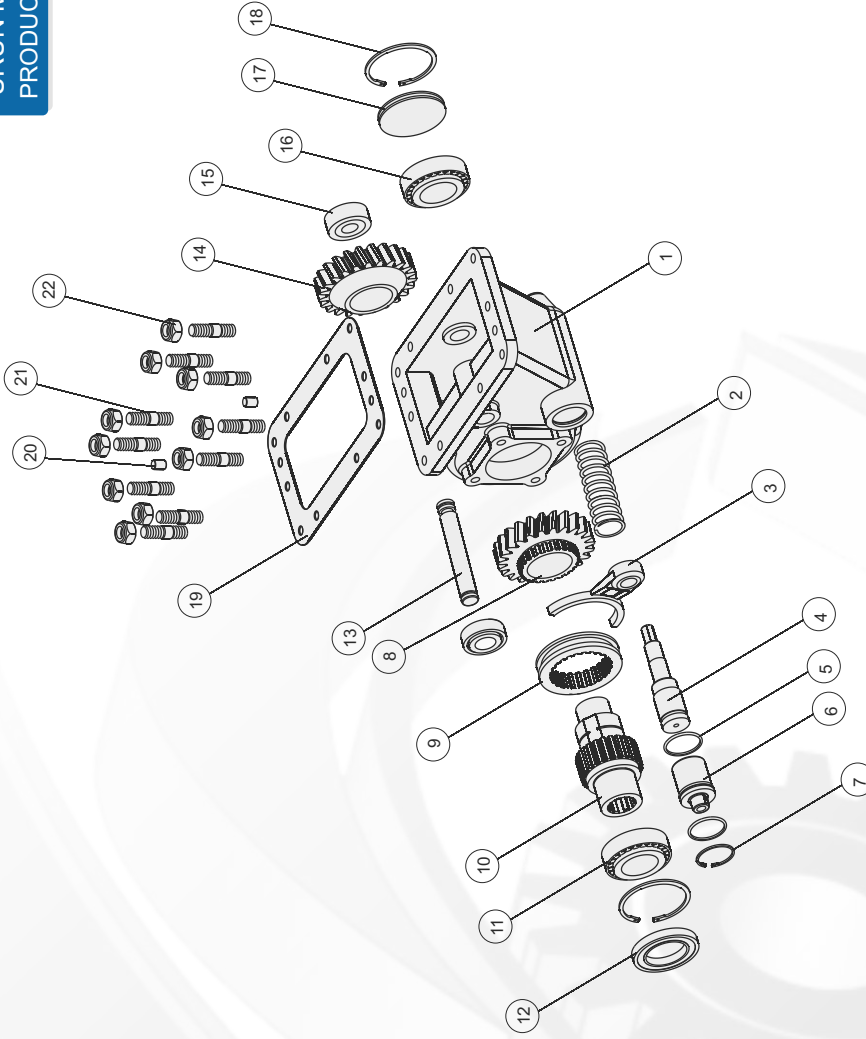
P.T.O. montaj edildikten sonra ana şanzıman yağını tamamlayın.  
Fill the oil of the gear box after mounting the P.T.O.

POWER TAKE OFF

P.T.O.

## POWER TAKE OFF

## P.T.O.

ÜRÜN MONTAJ ve PARÇA LİSTESİ  
PRODUCT ASSEMBLY and PART LIST

## SCANIA GR 860

Adet	Parça No	Parça Adı	Kod
1	1	Gövde	50324522 -01
1	2	Pnömatik Yay	50324522 -02
1	3	Hilal	50324522 -03
1	4	Pnömatik Mil	50324522 -04
2	5	O-ring	50324522 -05
1	6	Pnömatik Kovan	50324522 -06
1	7	472-45 Segman	50324522 -07
1	8	Alt Dişli	50324522 -08
1	9	Senkromeç	50324522 -09
1	10	Alt Mil	50324522 -10
1	11	32010 Rulman	50324522 -11

Adet	Parça No	Parça Adı	Kod
1	12	50x80x8 Keçe	50324522 -12
1	13	20-Ust Mil	50324522 -13
1	14	Gr860 Üst Dişli	50324522 -14
2	15	30304 Rulman	50324522 -15
1	16	32208 Rulman	50324522 -16
1	17	Pto Yan Kapak	50324522 -17
2	18	472-80 Segman	50324522 -18
1	19	Conta	50324522 -19
2	20	Merkezleme Pimi	50324522 -20
10	21	M12x45 Saplama	50324522 -21
10	22	M12 Somun	50324522 -22
44	TOPLAM PARÇA SAYISI		