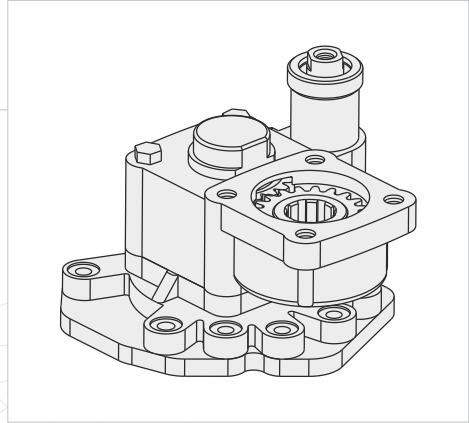
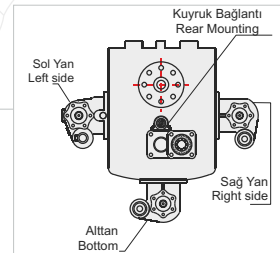
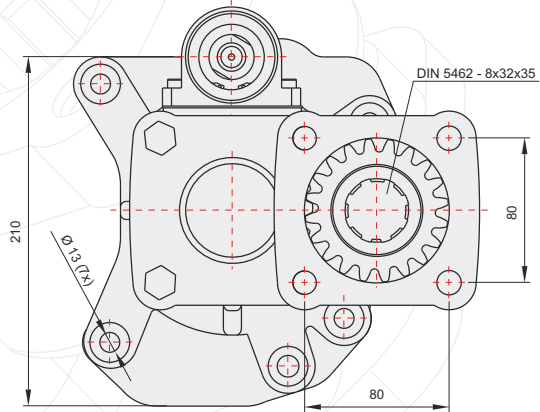
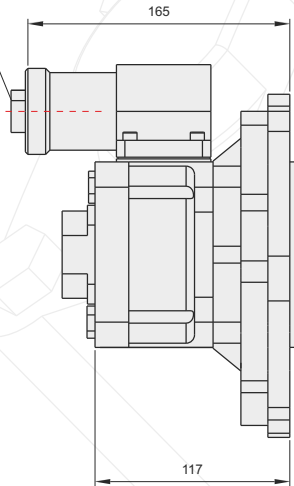


50125321



AIR INLET R 1/4"  
HAVA GİRİŞİ R 1/4"



### GENEL BİLGİLER/GENERAL DATA

P.T.O. KODU / P.T.O. CODE	50125321	
Tork / Torque	30 Kgm	295 Nm
Güç(1000 rpm) / Power	57,7 Hp	43 Kw
Devir / Speed	675 rpm	675 rpm
Oran / Ratio	1/1,12	1/1,12
Ağırlık / Weight	16,6 kg	36,6 lb
Bağlantı / Mounting	Kuyruk	Rear
Kumanda / Control	Havali	Pneumatic
Dönüş / P.T.O. Rotation	Sol - ISO	Left - ISO

Ana Şanzıman / Gearbox	Kullanılan Bazı Araçlar / Used Vehicles
G 100	2523-2528-3228 AXOR

Seçeğinizin pompanın dönüş yönü, P.T.O. dönüş yönü ile ters olmalıdır.  
The rotation of the chosen pump has to be opposite with the rotation of P.T.O.

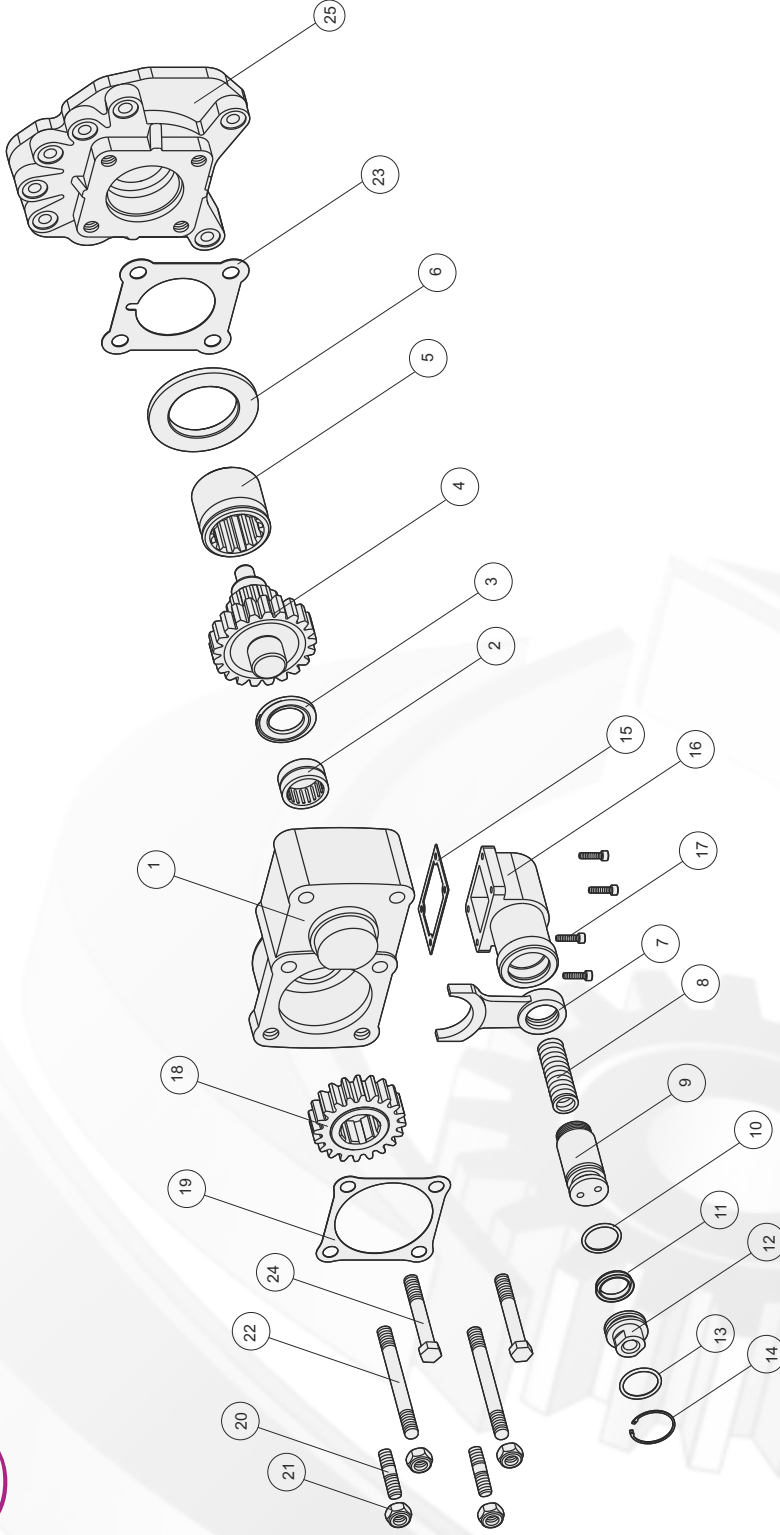
P.T.O. montaj edildikten sonra ana şanzıman yağını tamamlayın.  
Fill the oil of the gear box after mounting the P.T.O.

MERCEDES G100-2

POWER TAKE OFF

P.T.O.

ÜRÜN MONTAJ ve PARÇA LİSTESİ  
PRODUCT ASSEMBLY and PART LIST



MERCEDES G100-2

Adet	Parça No	Parça Adı	Kod
1	1	Gövde	50125321-01
1	2	Nk 30/20 Rulman	50125321-02
1	3	31x52x4 Bronz Pul	50125321-03
1	4	Grup Dişlisi	50125321-04
1	5	Kavrama Dişlisi	50125321-05
1	6	G100-2 Ortalayıcı Pul	50125321-06
1	7	Hilal	50125321-07
1	8	Prömatik Yay	50125321-08
1	9	Prömatik Piston	50125321-09
1	10	3x27 O-ring	50125321-10
1	11	33x25x5.5 Nutring	50125321-11
1	12	Prömatik Kapak	50125321-12
1	13	29,75x3,53 O-ring	50125321-13

Adet	Parça No	Parça Adı	Kod
1	14	472-36 Segman	50125321-14
1	15	Prömatik kovan contası	50125321-15
1	16	Prömatik kovan	50125321-16
4	17	M6x20 Cıvata	50125321-17
1	18	8x20 Dişli	50125321-18
1	19	Zf1 Conta	50125321-19
2	20	M12x45 Saplama	50125321-20
4	21	M12 Somun	50125321-21
2	22	M120x20 Saplama	50125321-22
1	23	Zf2 Conta	50125321-23
2	24	M12x90 Cıvata	50125321-24
1	25	G100 Plate	50125321-25
34		TOPLAM PARÇA SAYISI	