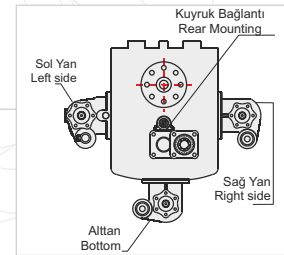
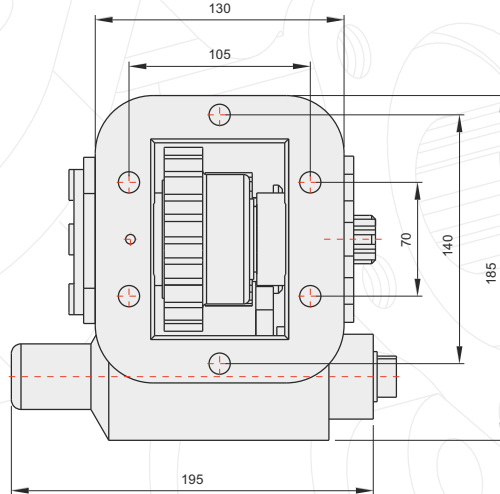
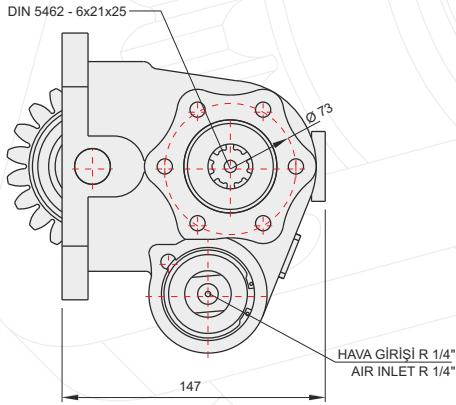
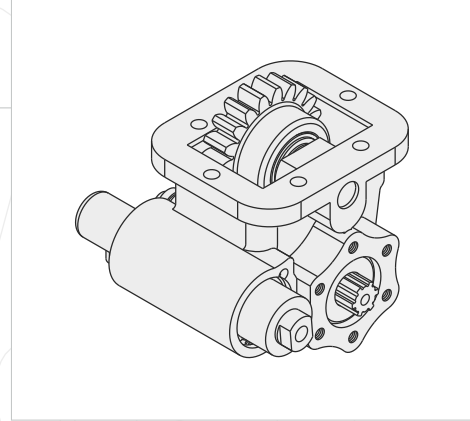


50410511/12



GENEL BİLGİLER/GENERAL DATA

P.T.O. KODU / P.T.O. CODE	50410511/12	
Tork / Torque	23 Kgm	225 Nm
Güç(1000 rpm) / Power	15,8 Hp	11,8 Kw
Devir / Speed	500 rpm	500 rpm
Oran / Ratio	1/1,5	1/1,5
Ağırlık / Weight	11 kg	24,3 lb
Bağlantı / Mounting	Sol	Left
Kumanda / Control	Havalı	Pneumatic
Dönüş / P.T.O. Rotation	Sol - UNI	Left - UNI

Ana Şanzıman / Gearbox	Kullanılan Bazı Araçlar / Used Vehicles
EATON-HEMA 475 L SML-SMA-SMO-SME-CMA-CMO	105.8-110.08-145.22 FATİH / 2014-2114 FORD CARGO AS 600 DODGE / 1800 INTER / 1210-1212-1312-FORD (83-86) 1812-1814-2117-2517 FORD(86) 140-1340 BMC/ GENETO 570

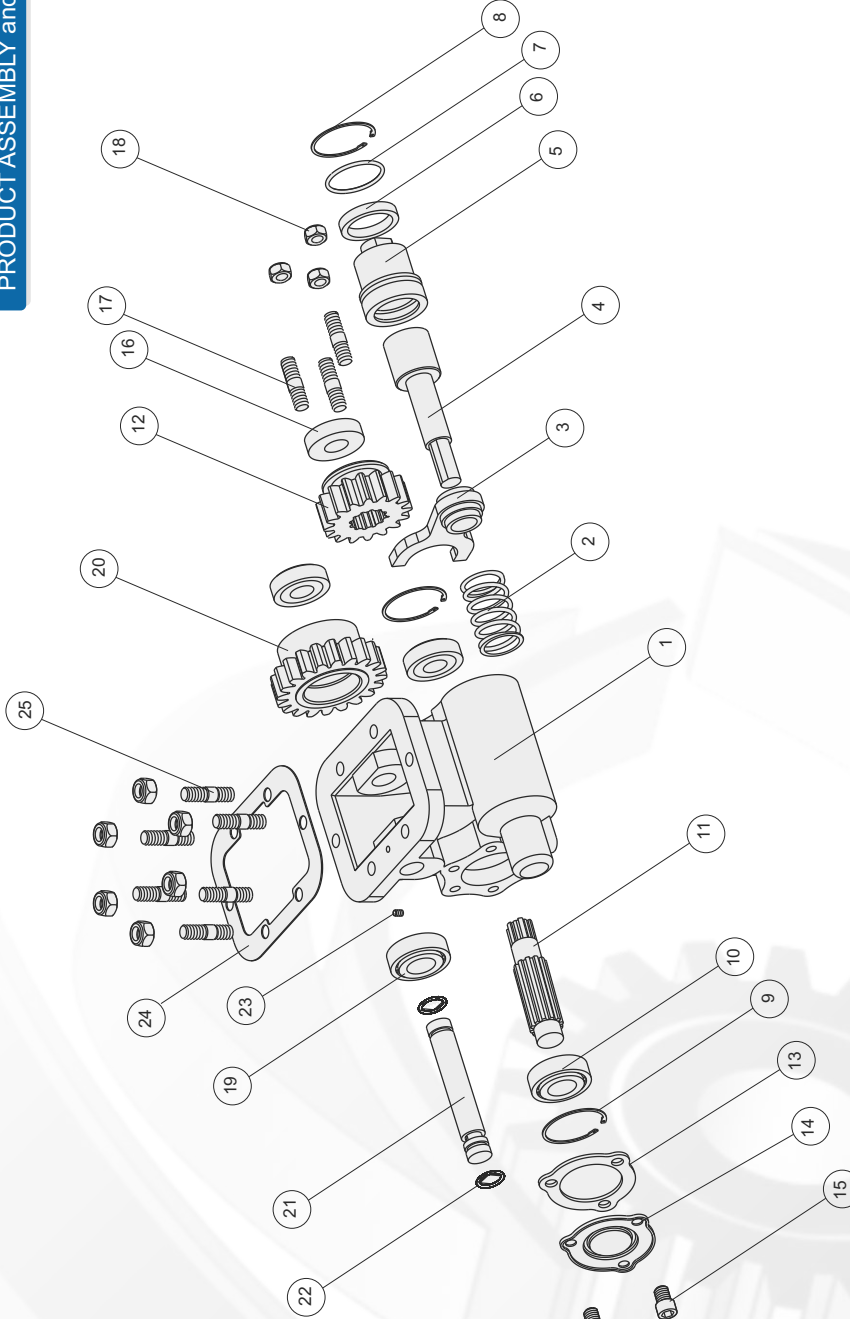
Seçtiğiniz pompanın dönüş yönü, P.T.O. dönüş yönü ile ters olmalıdır.
The rotation of the chosen pump has to be opposite with the rotation of P.T.O.

P.T.O. montaj edildikten sonra ana şanzıman yağını tamamlayın.
Fill the oil of the gear box after mounting the P.T.O.

ÜRÜN MONTAJ ve PARÇA LİSTESİ
PRODUCT ASSEMBLY and PART LIST

POWER TAKE OFF

P.T.O.



EATON-HEMA 475

Adet	Parça No	Parça Adı	Kod
1	1	Gövde	50410511-01
1	2	Yav	50410511-02
1	3	Hilal	50410511-03
1	4	Prömatik Mil	50410511-04
1	5	Prömatik Kovan	50410511-05
1	6	38x48,1x8 Nutring	50410511-06
1	7	3.53x42,86 O-ring	50410511-07
1	8	Tel Segman	50410511-08
2	9	472-52 Segman	50410511-09
2	10	6205 Rulman	50410511-10
1	11	6x12 Mil	50410511-11
1	12	Alt Dişli	50410511-12
1	13	Conta	50410511-13

Adet	Parça No	Parça Adı	Kod
1	14	Pto Yan Kapak	50410511-14
3	15	M10x16 Cıvata	50410511-15
1	16	25x52x10 Keçe	50410511-16
3	17	M10x45 Saplama	50410511-17
9	18	M10 Somun	50410511-18
2	19	30204 Rulman	50410511-19
1	20	Üst Dişli	50410511-20
1	21	Üst Mil-20	50410511-21
2	22	2.35x20 O-ring	50410511-22
1	23	M6x10 Setskur	50410511-23
1	24	Conta	50410511-24
6	25	M10x3/8 Saplama	50410511-25
46		TOPLAM PARÇA SAYISI	