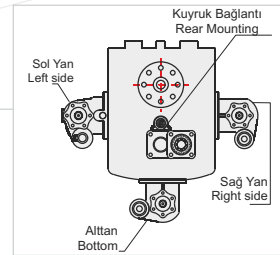
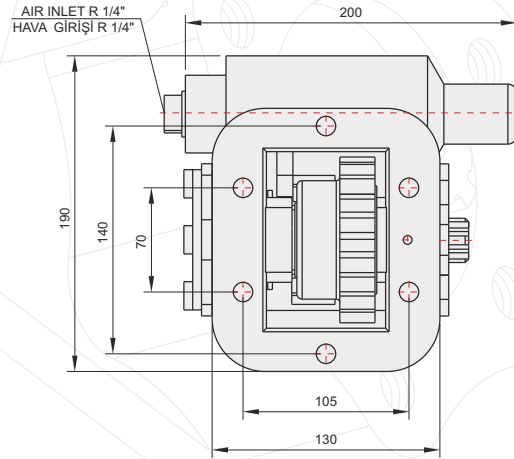
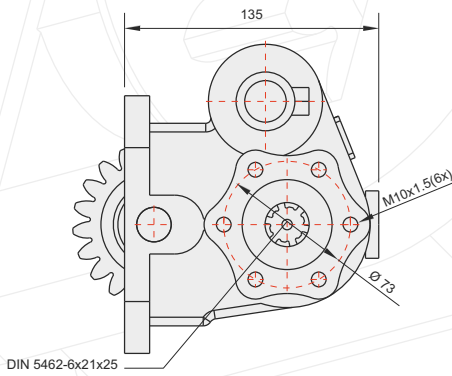
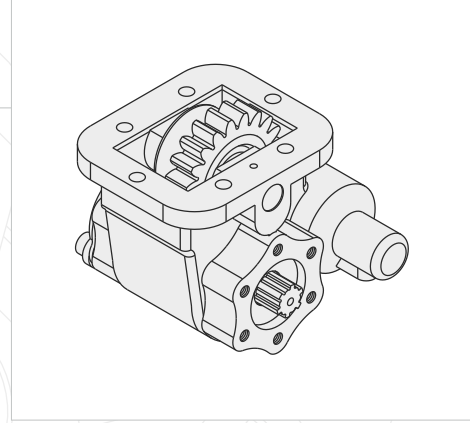


50422511



POWER TAKE OFF

P.T.O.

## GENEL BİLGİLER/GENERAL DATA

P.T.O. KODU / P.T.O. CODE	50422511	
Tork / Torque	21 Kgm	206 Nm
Güç(1000 rpm) / Power	10,7Hp	8,1 Kw
Devir / Speed	375 rpm	375 rpm
Oran / Ratio	1/1,25	1/1,25
Ağırlık / Weight	11 kg	24,3 lb
Bağlantı / Mounting	Sol	Left
Kumanda / Control	Havali	Pneumatic
Dönüş / P.T.O. Rotation	Sol - UNI	Left - UNI

Ana Şanzıman / Gearbox	Kullanılan Bazı Araçlar / Used Vehicles
EATON FS / FSO/H/V 4106-5206 A/B/H	180-167-620-622 BMC PRO / 220.26- 180 FATİH BMC 2520 FORD CARGO AS 950 / CHRYSLER 180.12-210-220 CD-320 MIDLUM RENAULT / FODEN 2000 / ERF E6.18 / 1415-1718 FORD 8.163-8.224-18.228 MAN

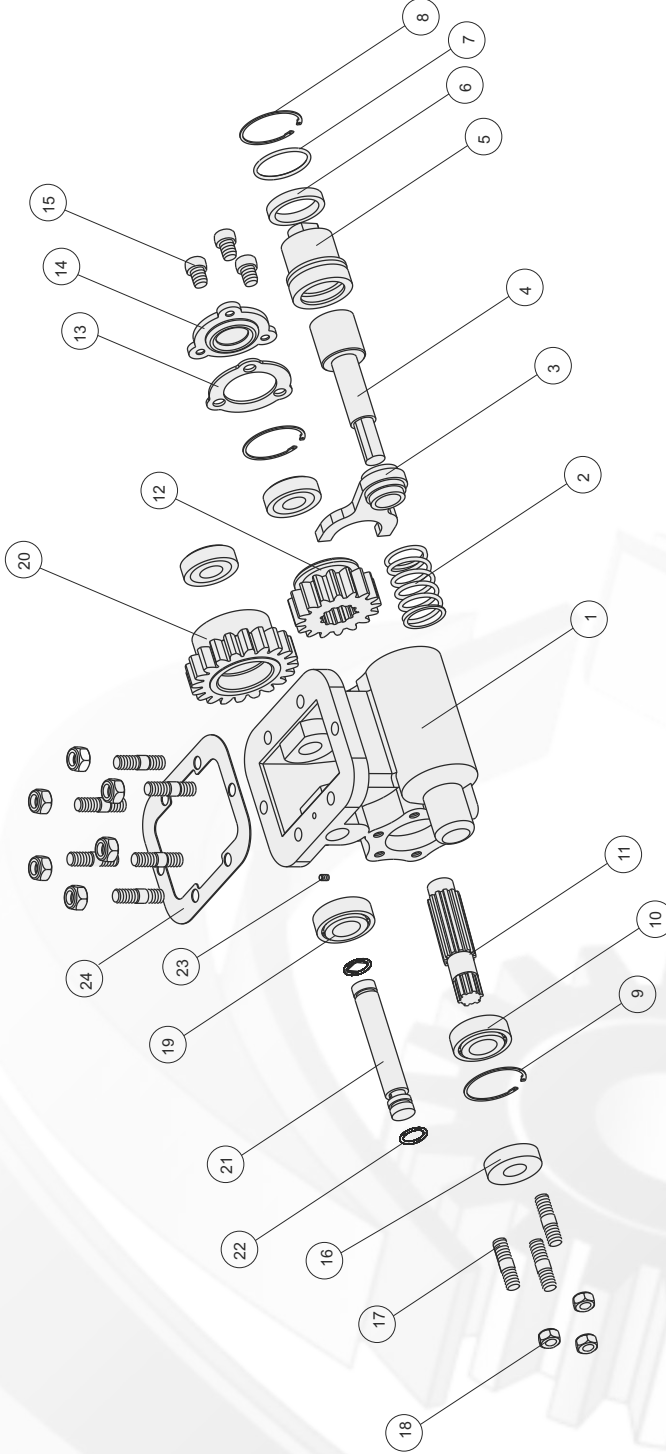
Seçeğinizin pompanın dönüş yönü, P.T.O. dönüş yönü ile ters olmalıdır.  
The rotation of the chosen pump has to be opposite with the rotation of P.T.O.

P.T.O. montaj edildikten sonra ana şanzıman yağını tamamlayın.  
Fill the oil of the gear box after mounting the P.T.O.

ÜRÜN MONTAJ ve PARÇA LİSTESİ  
PRODUCT ASSEMBLY and PART LIST

POWER TAKE OFF

P.T.O.



## EATON 4106

Adet	Parça No	Parça Adı	Kod
1	1	Gövde	50422511-01
1	2	Yay	50422511-02
1	3	Hilal	50422511-03
1	4	Prömatik Mil	50422511-04
1	5	Prömatik Kovan	50422511-05
1	6	38x48,1x8 Nutring	50422511-06
1	7	3,53x42,86 O-ring	50422511-07
1	8	Tel Segman	50422511-08
2	9	472-52 Segman	50422511-09
2	10	6205 Rulman	50422511-10
1	11	6x12 Mil	50422511-11
1	12	Alt Dişli	50422511-12

Adet	Parça No	Parça Adı	Kod
1	13	Conta	50422511-13
1	14	Pto Yan Kapak	50422511-14
3	15	M10x16 Cıvata	50422511-15
1	16	25x52x10 Keçe	50422511-16
9	17	M10x45 Saplama	50422511-17
9	18	M10 Somun	50422511-18
2	19	30204 Rulman	50422511-19
1	20	Üst Dişli	50422511-20
1	21	Üst Mil	50422511-21
2	22	2,35x20 O-ring	50422511-22
1	23	M6x10 Setskur	50422511-23
1	24	Conta	50422511-24
46	TOPLAM PARÇA SAYISI		